

產品概述

LED指示燈採用高亮度LED發光芯片為光源,壽命長、低功耗、高亮度、顏色純、光線均勻柔和,視覺效果極佳。安裝省時、省力、牢固,安全密封式後蓋設計,不易脫落,安全可靠。廣泛應用於機電、船舶、礦山機械,配電設備等各個領域。

產品特徵

- ✓ 高亮度
- ✓ 低功耗環保節能
- ✓ 壽命長(8萬小時以上)
- ✓ 集成LED芯片模塊
- ✓ 柱式接線設計
- ✓ 防塵、防水等級IP65以上

PRODUCT OVERVIEW

LED pilot light adopts high illuminated LED lighting chip as light source, coming with the advantage of long life time, low power consumption, high illumination, neutral light, the ray soft and well-distributed, good vision effect. Easy and fast to be installed. The save and sealed back cover design to make sure the cover not come off. It is reliable. This product is widely used in mechanical, ship, mine machinery, power distribution equipment etc fields

FEATURES

- ✓ High illumination
- ✓ Low consumption power and energy saving
- ✓ Long life-time (up to 80,000 hrs)
- ✓ Intergrated LED chips module
- ✓ Cylinder shape connection design
- ✓ Protection degree IP65

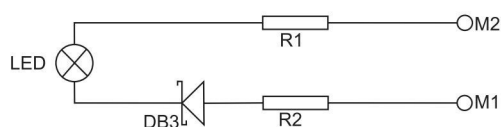
技術參數 TECHNICAL DATA

型號	Type	ML-22C(E)
可選電壓(V)	Input Voltage Options	AC/DC12V、AC/DC24V、AC/DC36V、AC/DC48V、AC/DC110V、AC/DC120V、AC220V、AC380V
可選顏色	Module Colors	R G Y O BL W
光源	Lamp	集成LED芯片模塊 Intergrated LED Chip Module
壽命(H)	Life-time	≥ 80,000H
光照度	Light Intensity of Illumination	≥ 100cd/m ²
工作環境溫度範圍	Operating Temperature Range	-5°C ~ +40°C
耐振動性	Vibration Resistance	加速度7m/s ² , 頻率 80Hz Speed7m/s ² , Frequency 80Hz
防護等級	Protection Degree	IP65
★48V-380V啓動電壓(V)	Start Voltage	≥ 24V
絕緣電阻	Insulation Resistance	≥ 2MΩ
常態絕緣電壓強度	Withstanding Voltage	2500V/50Hz, 1mA & 1min
污染等級	Polluction Degree	3級 Three degree
安裝類別	Installation Type	III
重量(g)	Weight	22.5g

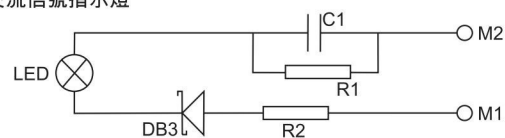
接線方式和電路說明

Connection way and circuit instruction

交/直流信號指示燈 AC/DC12V-120V



交流信號指示燈



編號說明 ORDERING

 例: **ML-22 C (E) - R -D2L**
1 ———— 公司代碼
 MACK Company Code

2 ———— LED

3 ———— 口徑
 Product Diameter

4 ———— 平圓式
 Product Diameter

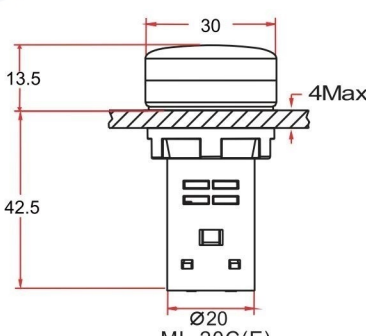
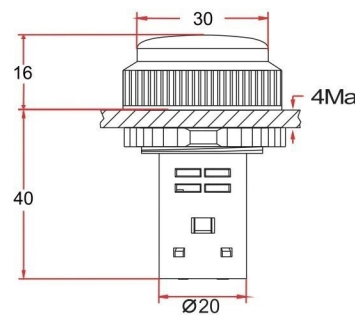
5 ———— 經濟型
 Economic

6 ———— 顏色
 Colors

7 ———— 額定電壓
 Voltage


D2L=AC/DC12V	D4L=AC/DC24V	D6L=AC/DC36V	D7L=AC/DC48V
D8L=AC/DC120V	N1L=AC110V	N2L=AC220V	N3L=AC380V

ML-22C(E)
LED指示燈


規格型號 Type	顏色 Colours	電壓 Voltage	尺寸圖 Size Chart (mm)	
ML-22C(E)-□-D2L	R 紅色	AC/DC12V	 <p>ML-20C(E)</p>	
ML-22C(E)-□-D4L				
ML-22C(E)-□-D6L	G 綠色	AC/DC24V		
ML-22C(E)-□-D7L				
ML-22C(E)-□-D8L	Y 黃色	AC/DC36V		
ML-22C(E)-□-N1L				
ML-22C(E)-□-N2L	O 橙色	AC/DC48V		
ML-22C(E)-□-N3L				
ML-30C(E)-□-D2L	BL 藍色	AC/DC120V		 <p>ML-30C(E)</p>
ML-30C(E)-□-D4L				
ML-30C(E)-□-D6L	W 白色	AC110V		
ML-30C(E)-□-D7L				
ML-30C(E)-□-D8L	AC220V			
ML-30C(E)-□-N1L				
ML-30C(E)-□-N2L	AC380V			
ML-30C(E)-□-N3L				

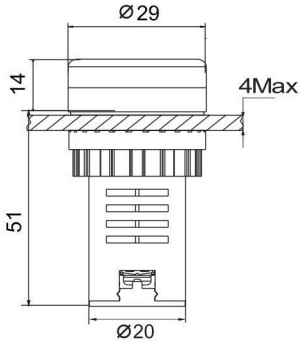
 電線規格(Wire size) : 1.0mm²-4.0mm²
 電線剝皮(Wire skin) : 8.0mm

技術參數 TECHNICAL DATA

型號	Type	ML-22C(S)	ML-22C(SH)
可選電壓(V)	Input Voltage Options	AC/DC12V、AC/DC24V、AC110V、AC220V	
可選顏色	Input Voltage Options	R	R
工作模式	Working mode	不帶燈 Without LED	帶LED燈 With LED
外殼直徑(mm)	Size	Φ22	
音量(分貝)	Volume	>80分貝	
閃爍頻率(Hz)	Flash Frequency	1.25Hz 75±2 次/每分鐘	
工作環境溫度範圍	Operating Temperature Range	-10°C~ +50°C	
耐振動性	Vibration Resistance	加速度7m/s ² , 頻率30HZ Accelerating Speed 7m/s ² , Frequency 30HZ	
常態絕緣電壓強度	Withstanding Voltage	2000V/50Hz、1mA、1min無擊穿、無飛弧現象	

編號說明 ORDERING
ML-22C(S)
 平圓式經濟型蜂鳴器

ML-22C(SH)
 平圓式經濟型帶燈蜂鳴器(LED)


規格型號 Type	顏色 Colours	電壓 Voltage	尺寸圖 Size Chart (mm)
ML-22C(S)-R-D2L	R 紅色	AC/DC12V	
ML-22C(S)-R-D4L			
ML-22C(S)-R-N1L			
ML-22C(S)-R-N2L			
ML-22C(SH)-R-D2L		AC/DC24V	
ML-22C(SH)-R-D4L			
ML-22C(SH)-R-N1L			
ML-22C(SH)-R-N2L			
		AC110V	
		AC220V	